



Manoharbai Shikshan Prasarak Mandal Armori's

**MAHATMA GANDHI ARTS, SCIENCE &  
LATE NASARUDDINBHAI PANJWANI COMMERCE  
COLLEGE, ARMORI**

**Dist. Gadchiroli (Maharashtra) 441 208**

**Affiliated to Gondwana University, Gadchiroli.**

**Re-accredited by NAAC 'A' with 3.24 CGPA**

---

**ANNUAL QUALITY ASSURANCE REPORT**

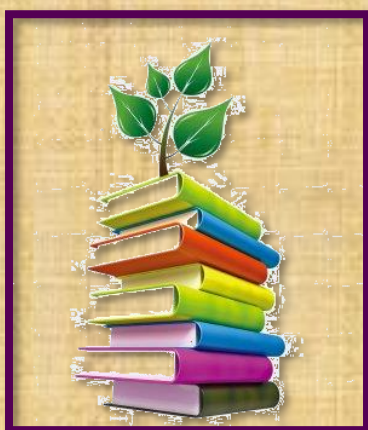
**AQAR : 2021-2022**

---

**CRITERION – I**  
**CURRICULAR ASPECTS**

**METRIC NO: ~ 1.2.1.**

**METRIC NAME: ~ Number of Programmes in which Choice Based  
Credit System (CBCS)/ elective course system  
has been implemented**



**Web: - [mgcollegearmori.ac.in](http://mgcollegearmori.ac.in)  
e-mail: - [mgcollege.armori@gmail.com](mailto:mgcollege.armori@gmail.com)  
Phone: - 07137-266558**

**MAHATMA GANDHI ARTS, SCIENCE AND LATE N. P. COMMERCE COLLEGE, ARMORI  
(AFFILIATED TO GONDWANA UNIVERSITY, GADCHIROLI)**

**SYLLABUS (CBCS)**

**BACHELOR OF ARTS**

<b>ALL SUBJECTS</b>	<b>FYBA</b>	<a href="https://unigug.ac.in/portal/web_site_attachment/files/New%20Syllabus%20B.%20A.%20Sem%20-I%20%26%20II%20.pdf">https://unigug.ac.in/portal/web_site_attachment/files/New%20Syllabus%20B.%20A.%20Sem%20-I%20%26%20II%20.pdf</a>
	<b>SYBA</b>	<a href="https://unigug.ac.in/portal/web_site_attachment/files/B.A.%20CBCS%20III%20%26%20IV%20Update%20180719.pdf">https://unigug.ac.in/portal/web_site_attachment/files/B.A.%20CBCS%20III%20%26%20IV%20Update%20180719.pdf</a>
	<b>TYBA</b>	<a href="https://unigug.ac.in/portal/web_site_attachment/files/B_A_%20syllabus%20V%26VI%20sem%20221119.pdf">https://unigug.ac.in/portal/web_site_attachment/files/B_A_%20syllabus%20V%26VI%20sem%20221119.pdf</a>

**MASTER OF ARTS**

<b>HISTORY</b>	<b>M.A. I</b>	<a href="https://unigug.ac.in/portal/web_site_attachment/files/M_A%20CBCS%20%20I%20%26II%20sem%20%202019-20.pdf">https://unigug.ac.in/portal/web_site_attachment/files/M_A%20CBCS%20%20I%20%26II%20sem%20%202019-20.pdf</a>
	<b>M.A. II</b>	<a href="https://unigug.ac.in/portal/web_site_attachment/files/Syllabus%20III%20%26%20IV.pdf">https://unigug.ac.in/portal/web_site_attachment/files/Syllabus%20III%20%26%20IV.pdf</a>
<b>ECONOMICS</b>	<b>M.A. I</b>	<a href="https://unigug.ac.in/portal/web_site_attachment/files/MA%20Eco%20CBCS%20SemI%20and%20II%20150617.pdf">https://unigug.ac.in/portal/web_site_attachment/files/MA%20Eco%20CBCS%20SemI%20and%20II%20150617.pdf</a>
	<b>M.A. II</b>	<a href="https://unigug.ac.in/portal/web_site_attachment/files/Syllabus%20III%20%26%20IV.pdf">https://unigug.ac.in/portal/web_site_attachment/files/Syllabus%20III%20%26%20IV.pdf</a>
<b>MARATHI</b>	<b>M.A. I</b>	<a href="https://unigug.ac.in/portal/web_site_attachment/files/MA%20MARATH%20CBCS%20Sem%20I%20and%20II%20150617.pdf">https://unigug.ac.in/portal/web_site_attachment/files/MA%20MARATH%20CBCS%20Sem%20I%20and%20II%20150617.pdf</a>
	<b>M.A. II</b>	<a href="https://unigug.ac.in/portal/web_site_attachment/files/CBCS%20M_A_%20Marathi%20SemIII%20and%20Sem%20IV.pdf">https://unigug.ac.in/portal/web_site_attachment/files/CBCS%20M_A_%20Marathi%20SemIII%20and%20Sem%20IV.pdf</a>
<b>SOCIOLOGY</b>	<b>M.A. I</b>	<a href="https://unigug.ac.in/portal/web_site_attachment/files/socialogy%20sem%20I_SEM-II%20socialogy.pdf">https://unigug.ac.in/portal/web_site_attachment/files/socialogy%20sem%20I_SEM-II%20socialogy.pdf</a>
	<b>M.A. II</b>	<a href="https://unigug.ac.in/portal/web_site_attachment/files/MA%20Soc%20CNCS%20Sem%20III%20and%20IV(1).pdf">https://unigug.ac.in/portal/web_site_attachment/files/MA%20Soc%20CNCS%20Sem%20III%20and%20IV(1).pdf</a>

**BACHELOR OF COMMERCE**

<b>ALL SUBJECTS</b>	<b>FYBCOM</b>	<a href="https://unigug.ac.in/portal/web_site_attachment/files/CBCS%20BCOM%20Sem%20I%20%26%20II.pdf">https://unigug.ac.in/portal/web_site_attachment/files/CBCS%20BCOM%20Sem%20I%20%26%20II.pdf</a>
	<b>SYBCOM</b>	<a href="https://unigug.ac.in/portal/web_site_attachment/files/BCOM%20Sem%20III%20CBCS(1).pdf">https://unigug.ac.in/portal/web_site_attachment/files/BCOM%20Sem%20III%20CBCS(1).pdf</a>
	<b>TYBCOM</b>	<a href="https://unigug.ac.in/portal/web_site_attachment/files/B%20Com_Sem%20V_VI.pdf">https://unigug.ac.in/portal/web_site_attachment/files/B%20Com_Sem%20V_VI.pdf</a>

## BACHELOR OF SCIENCE & MASTER OF SCIENCE

<b>LANGUAGES</b>	<b>FYBSC (ENG)</b>	<a href="https://unigug.ac.in/portal/web_site_attachment/files/BCom%20Sem%20I%20and%20II%20Comp%20Eng.pdf">https://unigug.ac.in/portal/web_site_attachment/files/BCom%20Sem%20I%20and%20II%20Comp%20Eng.pdf</a>
	<b>FYBSC (MAR)</b>	<a href="https://unigug.ac.in/portal/web_site_attachment/files/BCom%20Sem%20I%20and%20II%20Comp%20Marathi.pdf">https://unigug.ac.in/portal/web_site_attachment/files/BCom%20Sem%20I%20and%20II%20Comp%20Marathi.pdf</a>
	<b>FYBSC (HINDI)</b>	<a href="https://unigug.ac.in/portal/web_site_attachment/files/BSc%20Sem%20I%20and%20II%20Hindi.pdf">https://unigug.ac.in/portal/web_site_attachment/files/BSc%20Sem%20I%20and%20II%20Hindi.pdf</a>
<b>CHEMISTRY</b>	<b>FYBSC</b>	<a href="https://unigug.ac.in/portal/web_site_attachment/files/Chemistry%20Sem%20I%20and%20II%20120617.pdf">https://unigug.ac.in/portal/web_site_attachment/files/Chemistry%20Sem%20I%20and%20II%20120617.pdf</a>
	<b>SYBSC</b>	<a href="https://unigug.ac.in/portal/web_site_attachment/files/BSc_Chemistry%20Sem%20III%20and%20IV%20CBCS.pdf">https://unigug.ac.in/portal/web_site_attachment/files/BSc_Chemistry%20Sem%20III%20and%20IV%20CBCS.pdf</a>
	<b>TYBSC</b>	<a href="https://unigug.ac.in/portal/web_site_attachment/files/Chemistry%20%20SYLLABUS%20%20final%2031-05-19.pdf">https://unigug.ac.in/portal/web_site_attachment/files/Chemistry%20%20SYLLABUS%20%20final%2031-05-19.pdf</a>
	<b>MSC I</b>	<a href="https://unigug.ac.in/portal/web_site_attachment/files/Chemistry%20I%20and%20II%20130617.pdf">https://unigug.ac.in/portal/web_site_attachment/files/Chemistry%20I%20and%20II%20130617.pdf</a>
	<b>MSC II</b>	<a href="https://unigug.ac.in/portal/web_site_attachment/files/MSc%20Chemistry%20CBCS%20Sem%20III%20and%20IV.pdf">https://unigug.ac.in/portal/web_site_attachment/files/MSc%20Chemistry%20CBCS%20Sem%20III%20and%20IV.pdf</a>
<b>ZOOLOGY</b>	<b>FYBSC</b>	<a href="https://unigug.ac.in/portal/web_site_attachment/files/Zoology - Sem I and II- PDF converted-converted_1_.pdf">https://unigug.ac.in/portal/web_site_attachment/files/Zoology - Sem I and II- PDF converted-converted_1_.pdf</a>
	<b>SYBSC</b>	<a href="https://unigug.ac.in/portal/web_site_attachment/files/BSc%20Zoology%20Sem%20III%20%26%20IV%20CBCS.pdf">https://unigug.ac.in/portal/web_site_attachment/files/BSc%20Zoology%20Sem%20III%20%26%20IV%20CBCS.pdf</a>
	<b>TYBSC</b>	<a href="https://unigug.ac.in/portal/web_site_attachment/files/Zoology-CBCS- Syllabus for Sem V and Sem VI.pdf">https://unigug.ac.in/portal/web_site_attachment/files/Zoology-CBCS- Syllabus for Sem V and Sem VI.pdf</a>
	<b>MSC I</b>	<a href="https://unigug.ac.in/portal/web_site_attachment/files/Zoology%20Sem%20I%20and%20II%20130617.pdf">https://unigug.ac.in/portal/web_site_attachment/files/Zoology%20Sem%20I%20and%20II%20130617.pdf</a>
	<b>MSC II</b>	<a href="https://unigug.ac.in/portal/web_site_attachment/files/CBCS%20Syllabus%20for%20M_%20Sc_%20ZoologySem%20I%20to%20IV.pdf">https://unigug.ac.in/portal/web_site_attachment/files/CBCS%20Syllabus%20for%20M_%20Sc_%20ZoologySem%20I%20to%20IV.pdf</a>
<b>MATHEMATICS</b>	<b>FYBSC</b>	<a href="https://unigug.ac.in/portal/web_site_attachment/files/BSc%20Mathematics%20Sem%20I%20and%20II%20070817.pdf">https://unigug.ac.in/portal/web_site_attachment/files/BSc%20Mathematics%20Sem%20I%20and%20II%20070817.pdf</a>
	<b>SYBSC</b>	<a href="https://unigug.ac.in/portal/web_site_attachment/files/BSc%20botany%20semIII%20%26%20IV%20CBCS.pdf">https://unigug.ac.in/portal/web_site_attachment/files/BSc%20botany%20semIII%20%26%20IV%20CBCS.pdf</a>
	<b>TYBSC</b>	<a href="https://unigug.ac.in/portal/web_site_attachment/files/B_Sc_%20Botany%20V%20%26%20VI.PDF">https://unigug.ac.in/portal/web_site_attachment/files/B_Sc_%20Botany%20V%20%26%20VI.PDF</a>
	<b>MSC I</b>	<a href="https://unigug.ac.in/portal/web_site_attachment/files/GUG%20Sem%20I%20%26%20II-%20Final%20Final%20Syllabus.pdf">https://unigug.ac.in/portal/web_site_attachment/files/GUG%20Sem%20I%20%26%20II-%20Final%20Final%20Syllabus.pdf</a>
	<b>MSC II</b>	<a href="https://unigug.ac.in/portal/web_site_attachment/files/GUG%20Sem%20III%20and%20IV%20Final%20Final%20Syllabus.pdf">https://unigug.ac.in/portal/web_site_attachment/files/GUG%20Sem%20III%20and%20IV%20Final%20Final%20Syllabus.pdf</a>
<b>GEOLOGY</b>	<b>FYBSC</b>	<a href="https://unigug.ac.in/portal/web_site_attachment/files/Geology%20Sem%20I%20and%20II%20120617.pdf">https://unigug.ac.in/portal/web_site_attachment/files/Geology%20Sem%20I%20and%20II%20120617.pdf</a>
	<b>SYBSC</b>	<a href="https://unigug.ac.in/portal/web_site_attachment/files/BSc%20Geology%20SEM%20III%20%26%20IV%20CBCS.pdf">https://unigug.ac.in/portal/web_site_attachment/files/BSc%20Geology%20SEM%20III%20%26%20IV%20CBCS.pdf</a>
	<b>TYBSC</b>	<a href="https://unigug.ac.in/portal/web_site_attachment/files/GeologySemV_VI.pdf">https://unigug.ac.in/portal/web_site_attachment/files/GeologySemV_VI.pdf</a>
	<b>MSC I</b>	<a href="https://unigug.ac.in/portal/web_site_attachment/files/Geology%20I%20and%20II%20130617.pdf">https://unigug.ac.in/portal/web_site_attachment/files/Geology%20I%20and%20II%20130617.pdf</a>
	<b>MSC II</b>	<a href="https://unigug.ac.in/portal/web_site_attachment/files/MSc%20Geology%20CBCS%20Sem%20III%20and%20IV%20150717.pdf">https://unigug.ac.in/portal/web_site_attachment/files/MSc%20Geology%20CBCS%20Sem%20III%20and%20IV%20150717.pdf</a>
<b>BOTANY</b>	<b>FYBSC</b>	<a href="https://unigug.ac.in/portal/web_site_attachment/files/B.Sc.%20Botany%20I%20%26%20II.PDF">https://unigug.ac.in/portal/web_site_attachment/files/B.Sc.%20Botany%20I%20%26%20II.PDF</a>

	<b>SYBSC</b>	<a href="https://unigug.ac.in/portal/web_site_attachment/files/BSC%20botany%20semIII%20%26%20IV%20CBCS.pdf">https://unigug.ac.in/portal/web_site_attachment/files/BSC%20botany%20semIII%20%26%20IV%20CBCS.pdf</a>
	<b>TYBSC</b>	<a href="https://unigug.ac.in/portal/web_site_attachment/files/B_Sc_%20Botany%20V%20%26%20VI.PDF">https://unigug.ac.in/portal/web_site_attachment/files/B_Sc_%20Botany%20V%20%26%20VI.PDF</a>
<b>MICROBIOLOGY</b>	<b>FYBSC</b>	<a href="https://unigug.ac.in/portal/web_site_attachment/files/Syllabus_MB_CBCS_Sem_I_II.pdf">https://unigug.ac.in/portal/web_site_attachment/files/Syllabus_MB_CBCS_Sem_I_II.pdf</a>
	<b>SYBSC</b>	<a href="https://unigug.ac.in/portal/web_site_attachment/files/Syllabus_B_SC_MB_CBCS_SEM-III-IV.pdf">https://unigug.ac.in/portal/web_site_attachment/files/Syllabus_B_SC_MB_CBCS_SEM-III-IV.pdf</a>
	<b>TYBSC</b>	<a href="https://unigug.ac.in/portal/web_site_attachment/files/UGC_Core_syllabus_SEM_V-VI.pdf">https://unigug.ac.in/portal/web_site_attachment/files/UGC_Core_syllabus_SEM_V-VI.pdf</a>
<b>COMPUTER SCIENCE</b>	<b>FYBSC</b>	<a href="https://unigug.ac.in/portal/web_site_attachment/files/BSc%20CS%20CBCS%20Sem%20I%20and%20II%20070817.pdf">https://unigug.ac.in/portal/web_site_attachment/files/BSc%20CS%20CBCS%20Sem%20I%20and%20II%20070817.pdf</a>
	<b>SYBSC</b>	<a href="https://unigug.ac.in/portal/web_site_attachment/files/B_Sc%20Sem%20III%20%26%20IV%20CBCS.pdf">https://unigug.ac.in/portal/web_site_attachment/files/B_Sc%20Sem%20III%20%26%20IV%20CBCS.pdf</a>
	<b>TYBSC</b>	<a href="https://unigug.ac.in/portal/web_site_attachment/files/BSc_CS_V_VI_Revised.pdf">https://unigug.ac.in/portal/web_site_attachment/files/BSc_CS_V_VI_Revised.pdf</a>

## **DIRECTIONS OF CBCS IMPLEMENTATION**

<b>B.A.</b>	<a href="https://unigug.ac.in/portal/web_site_attachment/files/no%2032(1).pdf">https://unigug.ac.in/portal/web_site_attachment/files/no%2032(1).pdf</a>
<b>B.SC.</b>	<a href="https://unigug.ac.in/portal/web_site_attachment/files/Direction%20No%2029%20of%202017.pdf">https://unigug.ac.in/portal/web_site_attachment/files/Direction%20No%2029%20of%202017.pdf</a>
<b>B.COM.</b>	<a href="https://unigug.ac.in/portal/web_site_attachment/files/BcomDire21122017143938.pdf">https://unigug.ac.in/portal/web_site_attachment/files/BcomDire21122017143938.pdf</a>
<b>B.SC. HOME SCI.</b>	<a href="https://unigug.ac.in/portal/web_site_attachment/files/DIRECTION%20NO_BSc%20HomeSci%20310717.pdf">https://unigug.ac.in/portal/web_site_attachment/files/DIRECTION%20NO_BSc%20HomeSci%20310717.pdf</a>
<b>M.SC. (ALL)</b>	<a href="https://unigug.ac.in/portal/web_site_attachment/files/Msc%20Maths%20Direction%20120617.pdf">https://unigug.ac.in/portal/web_site_attachment/files/Msc%20Maths%20Direction%20120617.pdf</a>
<b>M.A. (MARATHI)</b>	<a href="https://unigug.ac.in/portal/web_site_attachment/files/direction%20marath%20cbcsc%20150617.pdf">https://unigug.ac.in/portal/web_site_attachment/files/direction%20marath%20cbcsc%20150617.pdf</a>
<b>M.A. (ECONOMICS, SOCIOLOGY, HISTORY)</b>	<a href="https://unigug.ac.in/portal/web_site_attachment/files/Home%20Economics%20Direction%20310717.pdf">https://unigug.ac.in/portal/web_site_attachment/files/Home%20Economics%20Direction%20310717.pdf</a>